

# MONTHLY MEMBERSHIP PROGRESS REPORT

District 201Q2

Results as of: 4/30/2024

GMT:

LOCATION AUSTRALIA

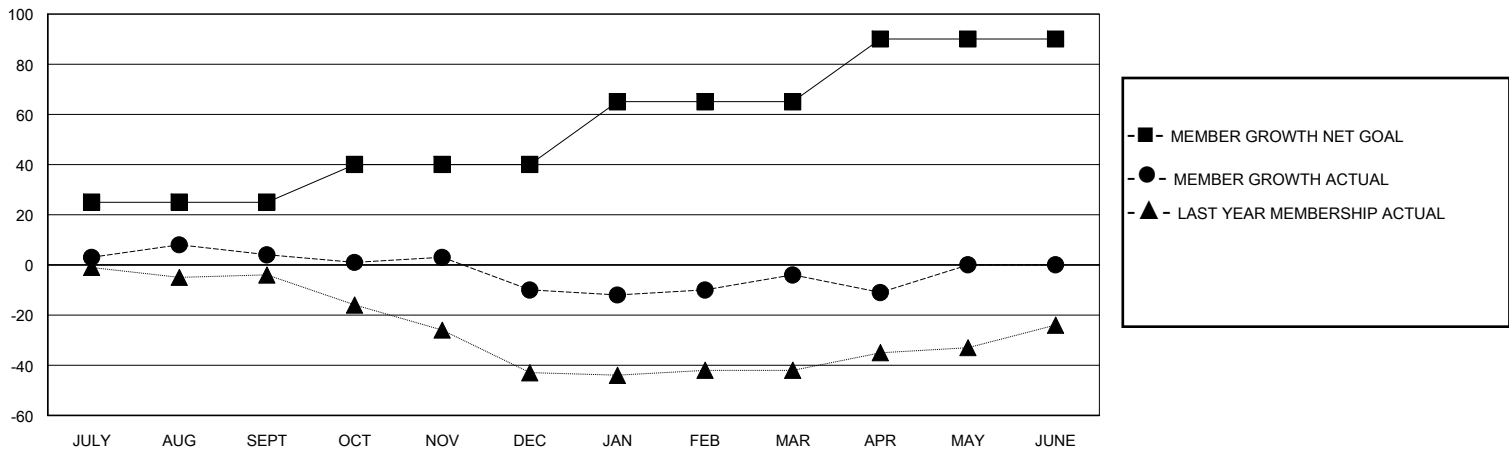
GMT CA

Clubs				Members			
RESULTS FOR 2023-2024				RESULTS FOR 2023-2024			
QUARTER	NEW CLUB GOAL	NEW CLUBS	DROPPED CLUBS	QUARTER	MEMBER GROWTH NET GOAL	MEMBER GROWTH ACTUAL	DROPPED MEMBERS ACTUAL (including transfers)
JULY/AUG/SEPT	0	0	0	JULY/AUG/SEPT	25	39	34
OCT/NOV/DEC	0	0	0	OCT/NOV/DEC	15	18	30
JAN/FEB/MAR	1	0	0	JAN/FEB/MAR	25	40	30
APR/MAY/JUNE	0	0	0	APR/MAY/JUNE	25	18	21

GOALS AND ACTUAL NEW CLUBS CUMULATIVE



GOALS AND ACTUAL MEMBERS CUMULATIVE



DROPPED CLUBS: 0	37 CLUBS OF 62 ADDED 1 OR MORE NEW MEMBERS	<b>GENDER DISTRIBUTION</b> MALE 527 (52.44%) FEMALE 478 (47.56%)
<b>DROPPED MEMBERS</b> DECEASED 14 CLUB CANCELLED 0 OTHER 101 TOTAL 115	<a href="#">CLICK HERE FOR CUMULATIVE MEMBERSHIP DATA</a>	TOTAL FAMILY UNIT MEMBERS 175 FAMILY MEMBERS PAYING HALF DUES 89